

CATALOG INDEX

- Superior Air Flow Test Results with CFM Chart
- Ordering and Fitment
- Intake Component Guide
- Top Builders
- VSA Basic Build
- 60° Basic Build
- 90° Basic Build
- Dual Runner Basic Build
- 60/90° & 90/90° Basic Builds
- Wimmer Stacks
- Filters
- Air Cleaner Kits
- Additional Intake Accessories
- Breathers
- Full Drive/Pulley Covers
- Engine/Brake Switch Covers
- Other Covers
- Rocker Box Mounted Gauges
- Special Gauges/Gauge Cups
- Handlebar Related
- Oil Tanks
- Oil Coolers
- Oil Cooler Accessories
- Motor Accessories
- Turntables/Floor Boards
- Triple Trees/Electrical Box
- Spark Plug Socket & Wrench Kit

ENGINE COVERS

Point Covers

Available with two or five mounting holes and choose between the smooth style or the ball milled.



- EVO**
- Smooth**
- Ball Milled**
- Twin Cam**
- Smooth**
- Ball Milled**

Inspection Cover

Available for FX or FL choose between the smooth style or the ball milled.



- FL Model**
- Smooth**
- Ball Milled**
- FX Model**
- Smooth**
- Ball Milled**

Derby Cover

Available with three or five mounting holes and choose between the smooth style or the ball milled.



- EVO**
- Smooth**
- Ball Milled**
- Twin Cam**
- Smooth**

BRAKE SWITCH COVERS

Two Piece Unit

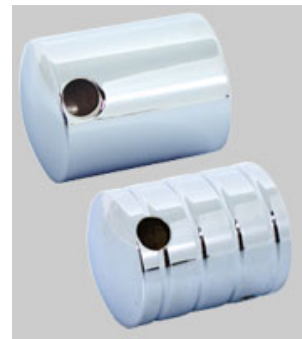
Billet aluminum cover for your hydraulic brake switch. This trick unit covers unsightly brake switches for that truly custom look. Cover is available with choice of radius groove cuts, or smooth and has no cuts, to give it that extra look, available in chrome. Easy install, please specify style when ordering.

Radius Groove

For use on switch in hanging position.



One Piece Unit

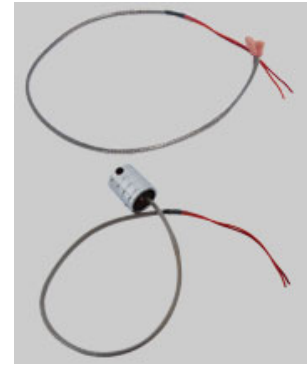


- Smooth**
- Ball Milled**

Our latest brake switch cover now comes complete in one piece. Available for use with most hydraulic brake switches, this unit is secured in place with two set screw that attach to the brake switch. A side hole allows access for our exclusive Namz™ wire harness (BSLS). Comes show chrome finished.

Ball Milled**Braided Wire Harness**

Namz™ exclusive wire harness. This braided stainless steel wire harness was designed exclusively for use with our BSCS or BSCR. The harness features 24 inches of 16 gauge wire braided in stainless steel with a clear coat that includes 2 flag terminals at one end. A must have to complete that custom look.



*BSCR shown with Braided Wire
Harness #BSLS*

Call Us Toll FREE IN THE USA AT 1.866.HOT.CYCLE or 215.721.4110

updated 06/17/2011 22:27